

# The Renaissance of the Vagina: From Dry to High

---

Dr Sharon Moss, Consultant Gynaecologist  
Women's Centre  
Beacon Hospital  
Saturday, September 28<sup>th</sup> 2024



# The Birth of Venus – Sandro Boticelli 1485

---



---

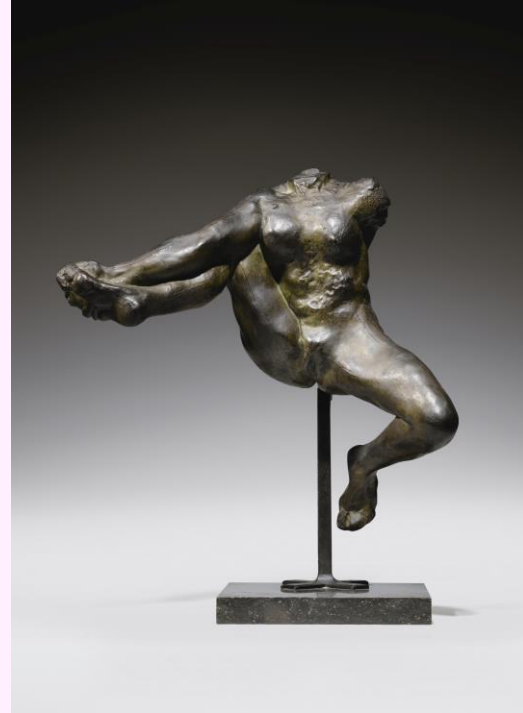
*"These marbled statues represented a value – an idealized value – of male and female roles in society that codified a power dynamic and social order that persists in so many ways today. It's such a gesture that seems thoughtless until you see it repeated over and over; it becomes clear it is intentional and deliberate, and the lasting effect erases feminine humanity. Even the most enlightened of us still have to unlearn cultural definitions of our sex that cast our vaginas as profane, obscene, ugly."*

The lack of female genitals on statues seems thoughtless until you see it repeated  
- Syreeta McFadden : The Guardian 13<sup>th</sup> April 2015

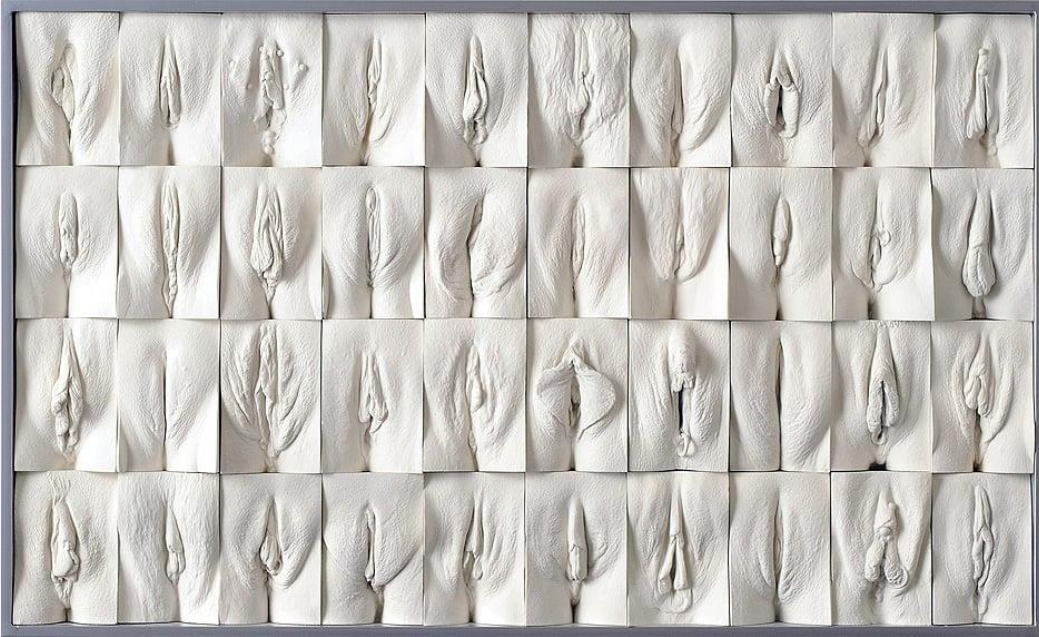


Origin of the World –  
Gustave Corbet (1866)

Iris –  
Auguste Rodin (1895)



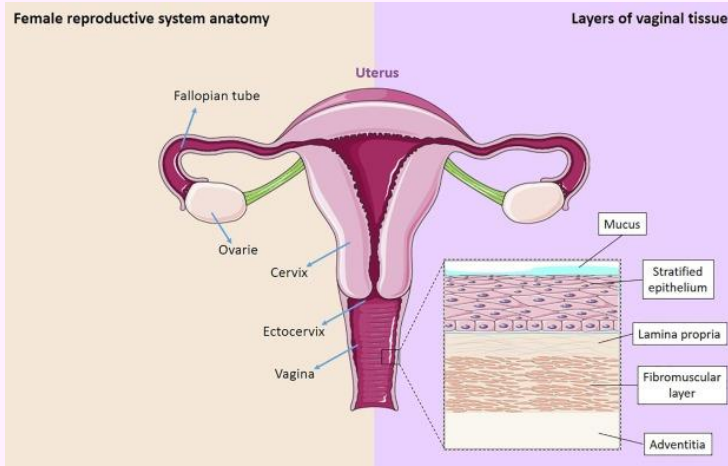
# The Great Wall of Vagina – Jamie McCarthy (2008)



*"The vagina became this whole new place to shame women around because there's money to be made in shaming people."*



# Anatomy



7 – 9cm fibromuscular tube

4 x layers

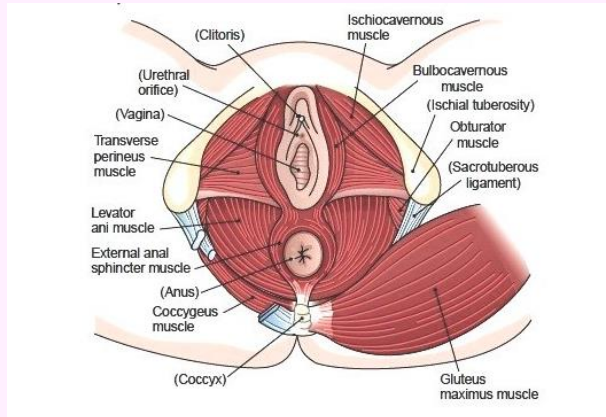
*epithelium*  
*lamina propria*  
*muscularis*  
*adventitia*

Pelvic floor muscles

surround

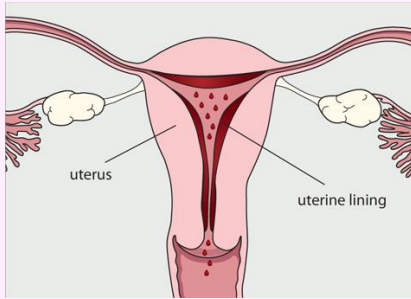
adventitia

*ischiocavernosus*  
*bulbocavernosus*  
*transverse perinei*  
*levator ani*

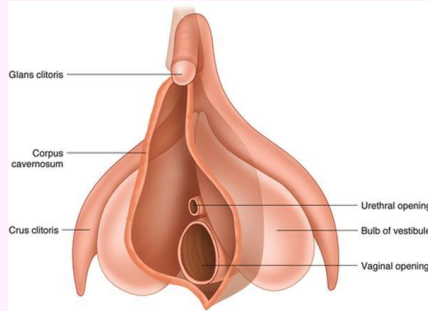


# Function

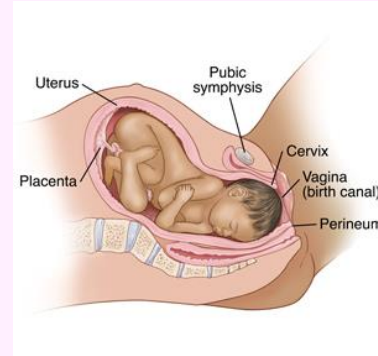
## MENSTRUATION



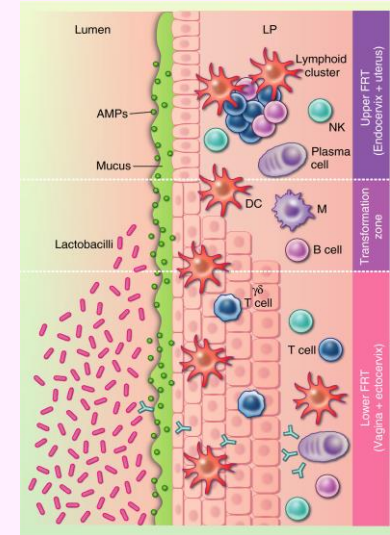
## SEXUAL



## REPRODUCTIVE



## IMMUNE DEFENCE



# Vaginal Health

Normal pH = 3.8 to 4.5 = slightly acidic

Lactobacillus acidophilus

SELF CLEANING

Changes in odour and discharge

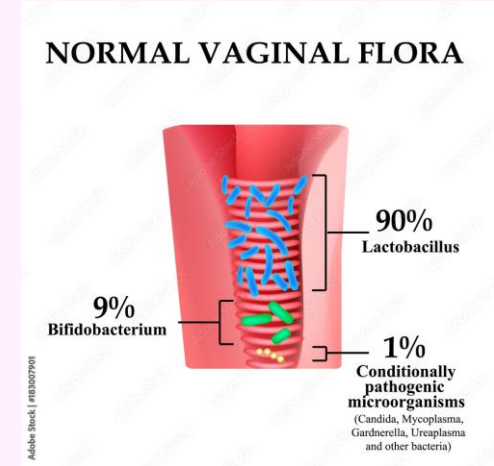
*menstruation*

*sexual intercourse*

*hormonal changes including menopause*

*medications*

*pathology eg. infections*







Goop

## JADE EGG

\$66.00

Used by women to increase sexual energy and pleasure, this nephrite jade stone helps connect the second chakra (the heart) and yoni for optimal self-love and well being.

Please be sure to follow the instructions included with your egg.

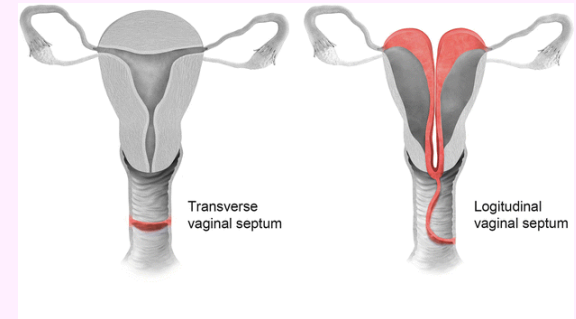
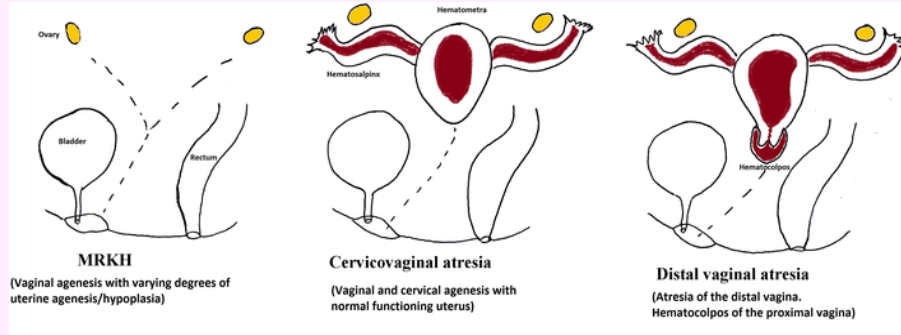
*Made exclusively for goop.*

- Nephrite jade
- Length: 1.57", Width: 1.18"
- Eggs are pre drilled for string add-on; we recommend using unwaxed dental floss

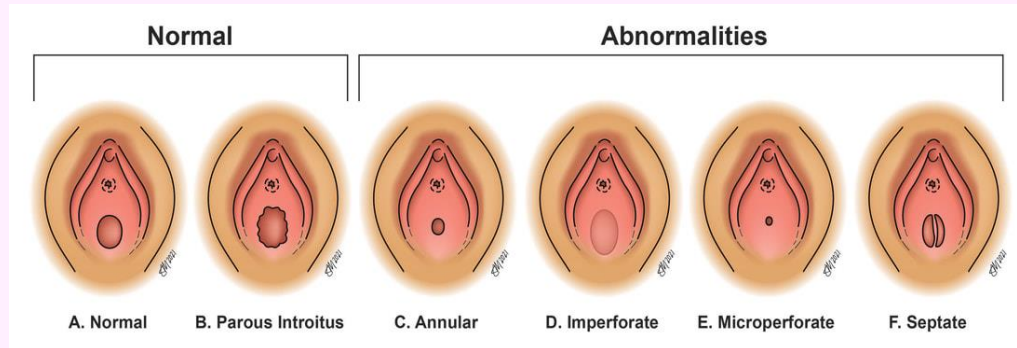


# Development / Congenital Anomalies

## Vaginal Atresia vs Aggenesis

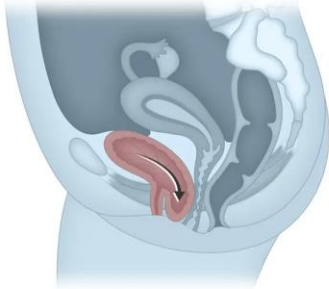


## Vaginal Septae



## Pelvic Organ Prolapse (POP)

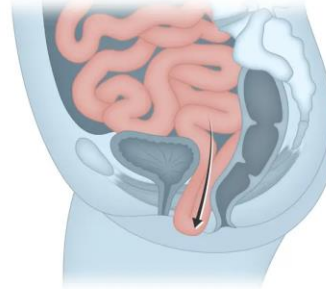
Bladder prolapse



Rectal prolapse



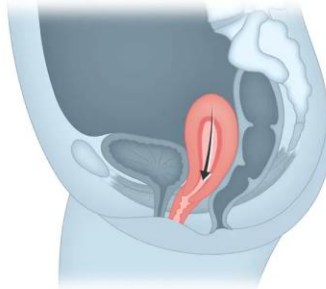
Small bowel prolapse



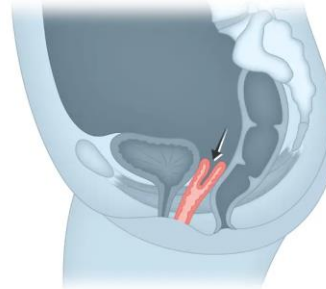
Urethral prolapse



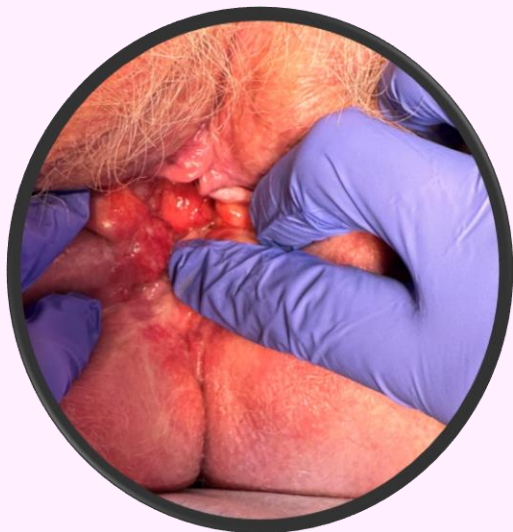
Uterine prolapse



Vault prolapse



© IHH Healthcare Singapore



*Squamous cell : 85-90%*  
*Adenocarcinoma : 7-10%*  
*Melanoma*  
*Sarcoma*  
*(mostly leiomyosarcoma)*

Vaginal cancer rare : 1-2% of genital tract cancers

Highest incidence in women > 75 years age

Approximately 15 cases PRIMARY vaginal cancer in Ireland per year

#### KNOWN RISK FACTORS

#### VAGINAL CANCER

A precancerous condition called vaginal intraepithelial neoplasia (VAIN) that often has no symptoms

Presence of the human papillomavirus (HPV), a sexually transmitted infection that can lead to the development of VAIN

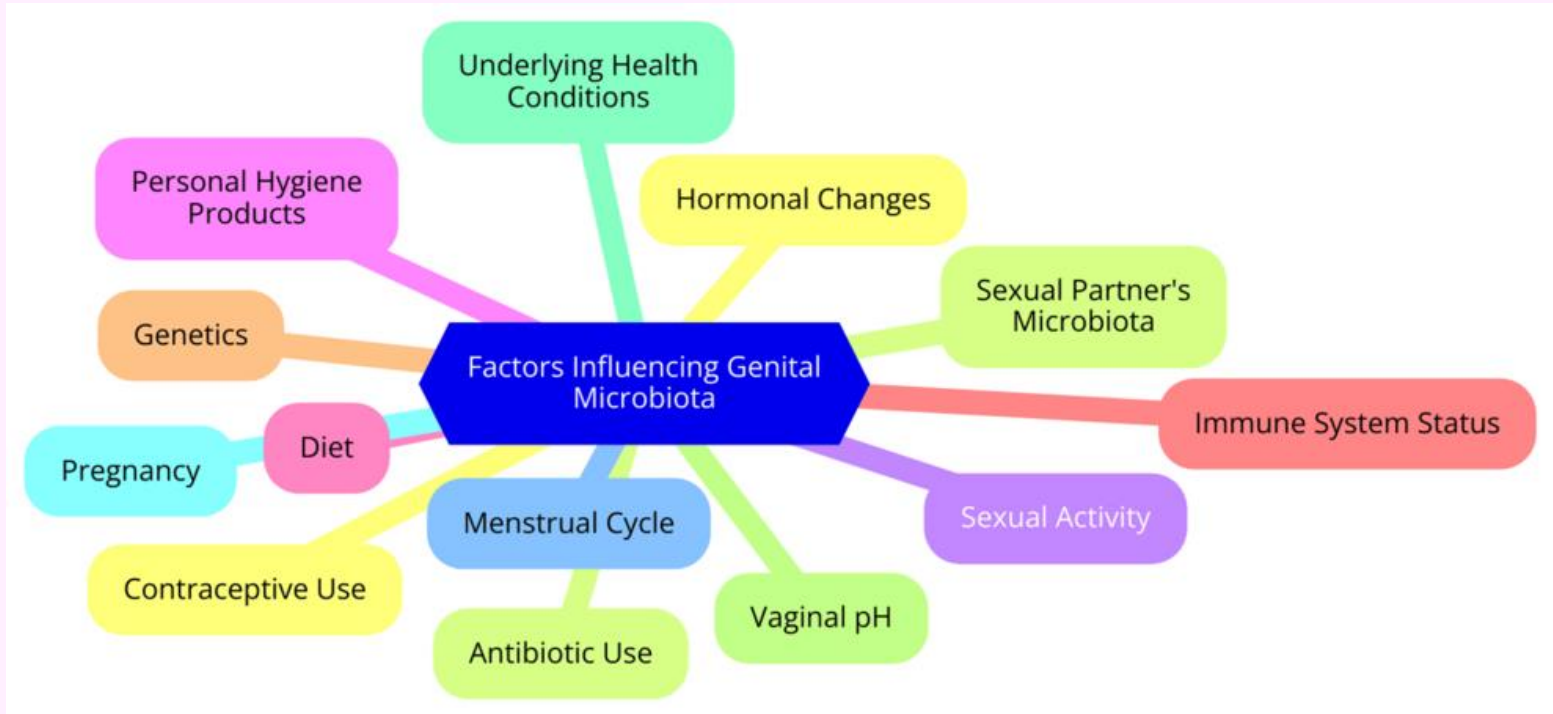
Tobacco smoking, which doubles your risk of vaginal cancer

Radiotherapy to the pelvis increases your risk of vaginal cancer, however this is very rare.

If you have had cervical cancer you are at increased risk of vaginal cancer

If your mother was prescribed the synthetic hormone diethylstilboestrol (DES) during pregnancy (before 1971), you have an increased risk of vaginal cancer

# Dysbiosis / Vaginitis



## Vaginitis

### Infectious vaginitis

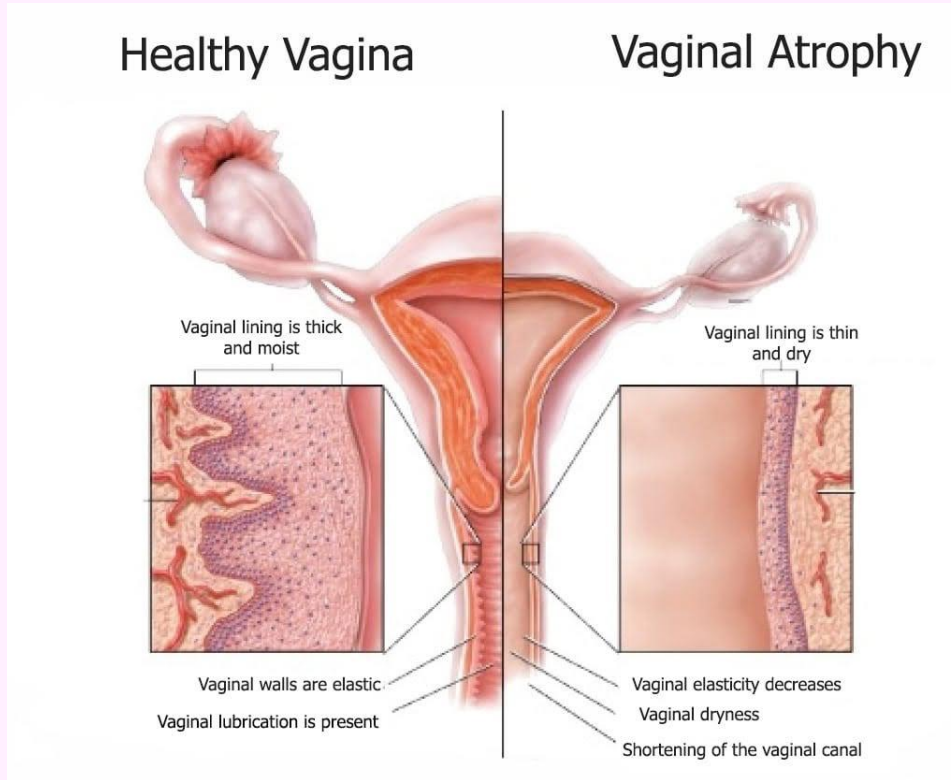
- Bacterial vaginosis
- Vulvovaginal Candidiasis
- Trichomoniasis

### Non- Infectious vaginitis

- Atrophic vaginitis
- Allergic vaginitis
- Foreign body
- Chemical irritation
- Desquamative vaginitis
- Lichen planus



# Atrophic Vaginitis





Non hormonal treatments

- water based lubricants
- vaginal moisturisers
- regular intercourse

## Vaginal oestrogens

Vagifem (oestradiol)

Ovestin cream (oestriol)

Estring





DHEA – dehydroepiandrosterone  
Prasterone 6.5mgs PV daily



Ospemifene  
SERM  
60mgs orally daily



Laser treatment

# The Team



# Thank you