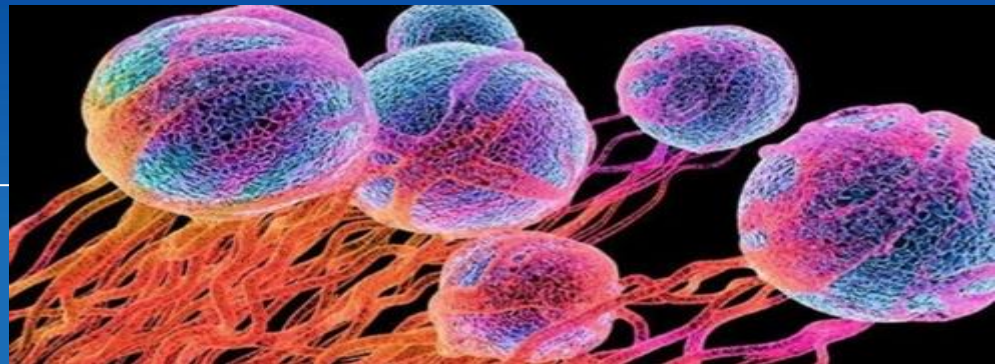
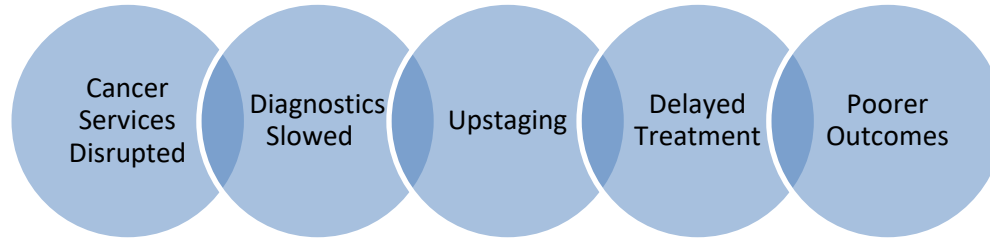


# Cancer Themes for 2024

Professor Jennifer Westrup



# The Impact of COVID on Cancer

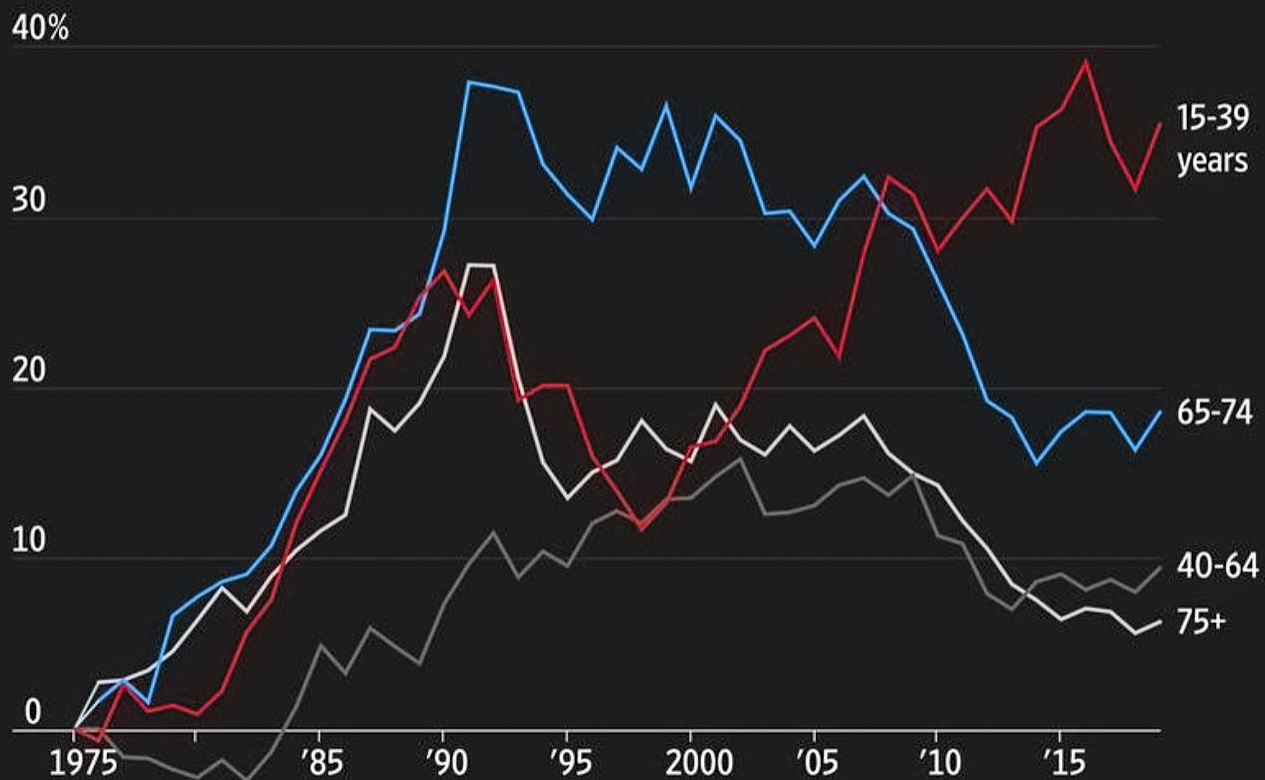


Higher numbers of late-stage cancers will be the hallmark over the next 2-5 years.

- Patient Reluctance
- Reduced system capacity
- Allocation HC staff
- Screening services paused:
  - Across Europe **100m screening test did not happen**
  - **250,000 FEWER PEOPLE SCREENED FOR CANCER IRELAND 2020**
  - Belgium / Netherlands: Cancer dx decreases in 2020 by 30-40%
- Clinical trials suspended

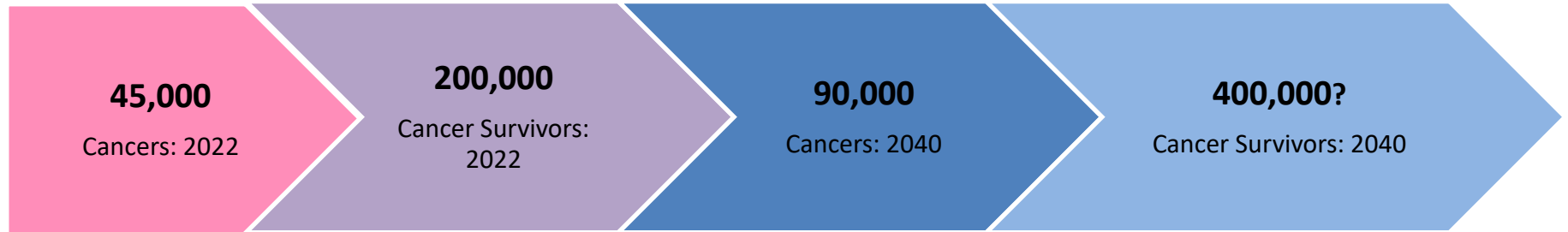
Cancer Mortality likely to increase by 17% in the next 5 years

## Cumulative change in new U.S. cancer case rates, by age\*



\*Based on incidence per 100,000 | Source: National Cancer Institute

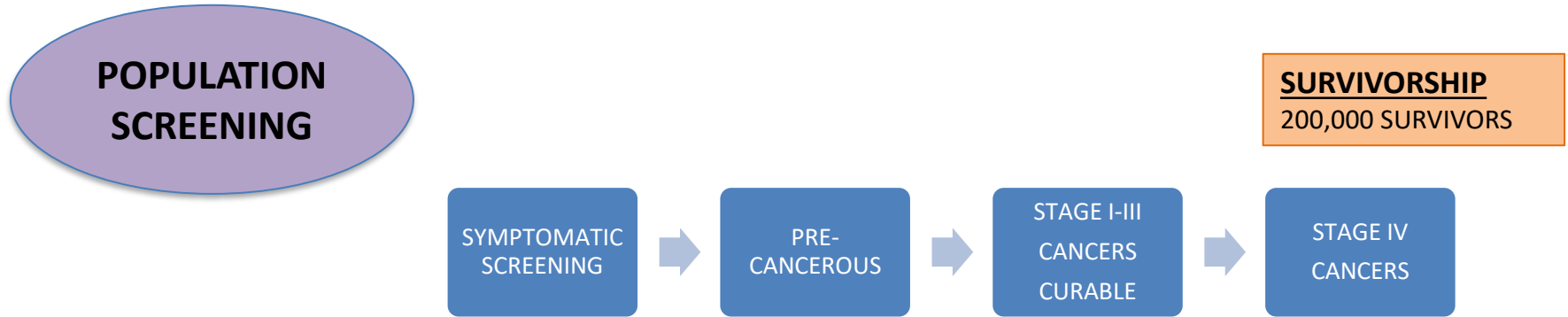
# CANCER DIAGNOSES: IRELAND



## 200,000 -> 400,000 Pool of Cancer Survivors

- Clinical Follow Up
- Blood Tests
- Scans / Mammograms / Scopes
- Ongoing Health Care
- Screening

# CANCER SERVICE PATHWAY



1. Accelerate stage shift
2. Increase Innovation
3. Resource the Prevalance Pool

## **Genetics**

Inherited Mutations 5-20%  
of all Cancers

## **Clinical Trials / Research**

## **Genomics**

Precision/Personalised  
treatment based on the TUMOR  
profile

A large, stylized, light blue 'S' shape is positioned on the left side of the slide, partially overlapping the main text area. The background is a solid, medium blue color.

# Thank you